

Asahi Kasei Corporation
Hibiya Mitsui Tower, 1-1-2 Yurakucho, Chiyoda-ku, Tokyo 100-0006 Japan
Phone: +81-(0)3-6699-3000
www.asahi-kasei.com

Asahi Kasei Microdevices Corp.
Hibiya Mitsui Tower, 1-1-2 Yurakucho, Chiyoda-ku, Tokyo 100-0006 Japan
Phone: +81-(0)3-6699-3933

Asahi Kasei Homes Corp.
Jinbocho Mitsui Building, 1-105 Kanda Jinbocho, Chiyoda-ku, Tokyo 101-8101 Japan
Phone: +81-(0)3-6899-3000

Asahi Kasei Construction Materials Corp.
Jinbocho Mitsui Building, 1-105 Kanda Jinbocho, Chiyoda-ku, Tokyo 101-8101 Japan
Phone: +81-(0)3-3296-3500

Asahi Kasei Pharma Corp.
Hibiya Mitsui Tower, 1-1-2 Yurakucho, Chiyoda-ku, Tokyo 100-0006 Japan
Phone: +81-(0)3-6699-3600

Asahi Kasei Medical Co., Ltd.
Hibiya Mitsui Tower, 1-1-2 Yurakucho, Chiyoda-ku, Tokyo 100-0006 Japan
Phone: +81-(0)3-6699-3750

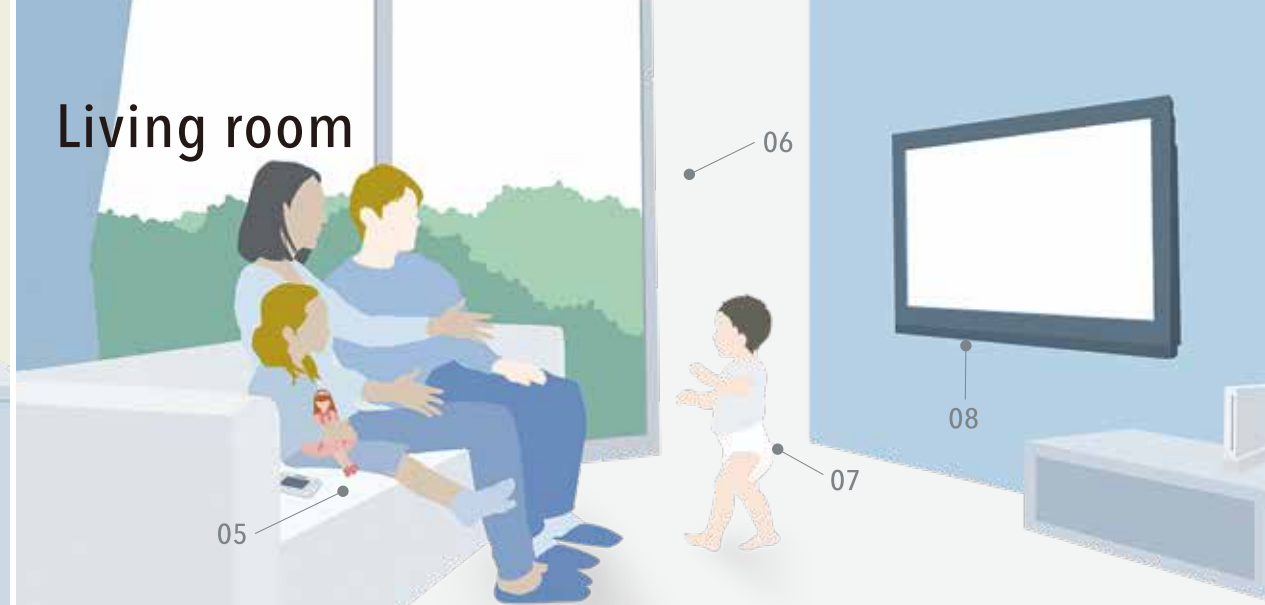
ZOLL Medical Corporation
269 Mill Rd., Chelmsford, MA 01824-4105 USA
Phone: +1-978-421-9655

Veloxis Pharmaceuticals, Inc.
2000 Regency Parkway, Suite 500, Cary, NC 27518 USA
Phone: +1-919-591-3090

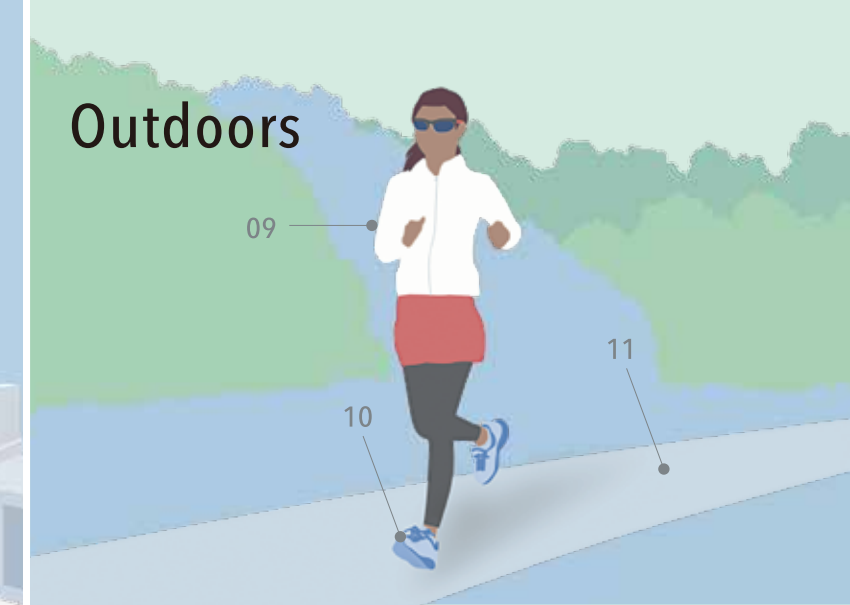
Kitchen



Living room



Outdoors



Creating for Tomorrow

The commitment of the Asahi Kasei Group:
To do all that we can in every era to help the people of the world
make the most of life and attain fulfillment in living.
Since our founding, we have always been deeply committed
to contributing to the development of society,
boldly anticipating the emergence of new needs.
This is what we mean by Creating for Tomorrow.

Automobile



Office



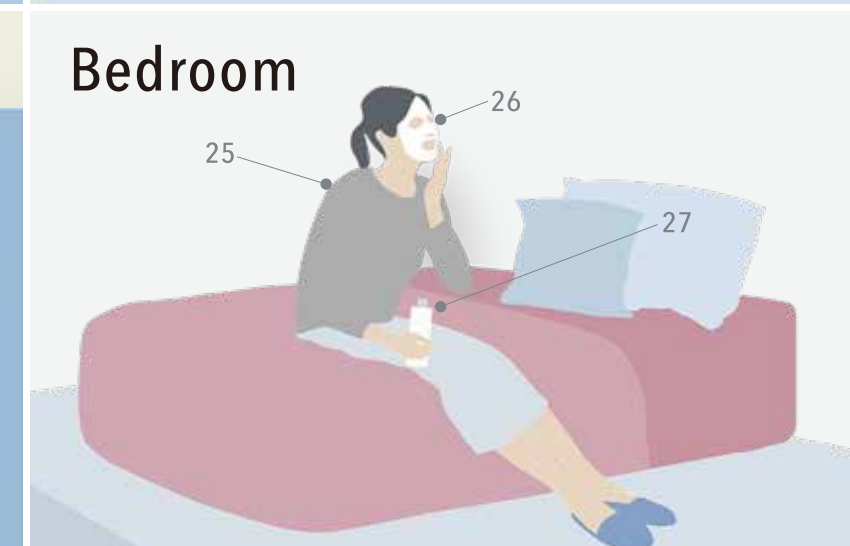
Hospital



Bathroom



Bedroom



Asahi Kasei Products and Technologies in Everyday Life

The Asahi Kasei Group's products and technologies, ranging from Hebel Haus™ unit homes and Saran Wrap™ cling film, and electronic parts used in computers and smartphones, to performance materials for automotive parts and interiors, and pharmaceuticals and AEDs that support people's lives, are used in various ways all around us.

- 01 Dishwashing detergent
- 02 Filtration at waterworks plant (hollow-fiber membranes)
- 03 Food preservation, cooking
- 04 Foods and beverages (microcrystalline cellulose)
- 05 Covering fabric for sofas (artificial suede)
- Video game console (polyacetal resin)
- Doll hair (Saran™ fiber)

- 06 Homes (unit homes, apartment buildings, condominiums)
- Construction materials (autoclaved aerated concrete, phenolic foam insulation panels)
- 07 Diapers (spunbond nonwovens, premium stretch fiber)
- 08 Materials and components of home electronics (polystyrene, material for semiconductors, LSIs, sensors)

- 09 Sportswear (premium stretch fiber, cupro fiber)
- Zippers (polyacetal)
- 10 Running shoes (thermoplastic elastomer, synthetic rubber)
- 11 Asphalt pavement (thermoplastic elastomer)
- 12 Automobile parts (performance resins)

- 13 Airbags (nylon 66 filament)
- Car navigation & audio system (audio/voice LSIs)
- 14 Interior material (artificial suede)
- 15 Tires (S-SBR for fuel-efficient tires, nylon 66 filament for tire cord)
- 16 Battery materials (Li-ion battery separator, lead-acid battery separator)
- 17 Paint

- 18 Food storage bags and containers
- 19 Materials and components of smartphones and laptop computers (Li-ion battery separator, material for semiconductors, LSIs, sensors)
- 20 Suit linings (cupro fiber)
- 21 Critical care devices (Defibrillators, AEDs, temperature management systems)
- 22 Medical devices (dialyzers, therapeutic apheresis devices)

- 23 Prescription drugs, pharmaceutical additives
- 24 Shampoo (low-irritation surfactant)
- Dispenser bottles (polyethylene)
- 25 Innerwear (cupro fiber)
- 26 Facial mask (cupro nonwoven fabric)
- 27 Skin care products (cosmetics raw materials)

History of diversification and taking challenges to meet the needs of the times

The Asahi Kasei Group has consistently grown through the proactive transformation of its business portfolio to meet the evolving needs of every age. We have consistently provided products and services that form solutions to various environmental and social challenges.

Group Mission

We, the Asahi Kasei Group, contribute to life and living for people around the world.

Group Vision

Providing new value to society by enabling "living in health and comfort" and "harmony with the natural environment."

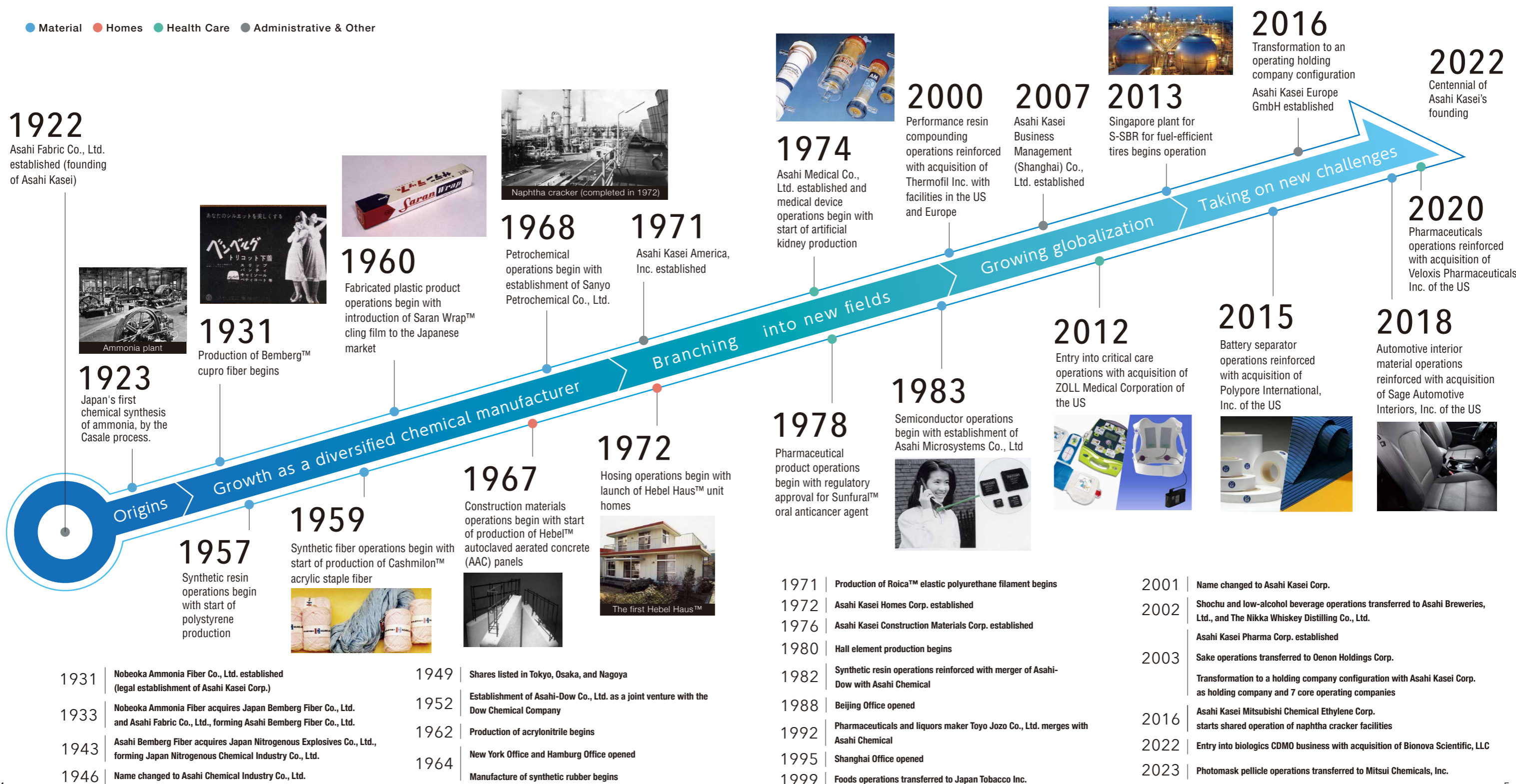
Group Values

Sincerity—Being sincere with everyone.

Challenge—Boldly taking challenges, continuously seeking change.

Creativity—Creating new value through unity and synergy.

● Material ● Homes ● Health Care ● Administrative & Other



Material

With advanced technology and innovative concepts, we develop materials and products that are considerate of the environment with high added value to open new possibilities for the future.



Gokasegawa Hydropower Plant



AKXY2™ concept car



Fresh Logi™ cloud-based fresh produce logistics solution

Environmental Solutions

Operating company | Asahi Kasei

A petrochemical business advancing toward sustainability with technology development for use of bio-based material, etc., energy storage related products and services focused on the future of energy for a society aiming for carbon neutrality, developing CO₂ recovery technology, and products and technologies for green hydrogen as clean energy. With responsibility for the overall energy policy of the Asahi Kasei Group, this business advances technology innovation for climate change including reduced CO₂ emissions.

Major products

- Caustic soda, AN, sodium cyanide, acetonitrile, methacrylonitrile, MMA, Delpet™ PMMA, styrene, Suntec™ and Sunfine™ polyethylene, polystyrene
- Synthetic rubber, elastomers
- Chlor-alkali electrolysis systems (ion-exchange membranes, electrolyzers, electrodes, etc.), Microza™ hollow-fiber filtration membranes
- Hipore™ and Celgard™ Li-ion battery separator, Daramic™ lead-acid battery separator



Acrylonitrile

Acrylonitrile is the key production material for acrylic fiber, ABS resin, and many other products. Markets around the world are supplied from our plants in Japan, Korea and Thailand.



Hipore™ and Celgard™ Li-ion battery separator

These separator membranes act as an insulator in lithium-ion batteries, with use expanding in automotive and energy storage applications in addition to consumer electronics.

Alkaline water electrolysis system at FH2R

Leveraging our chlor-alkali electrolysis technology, which is widely adopted around the world, we are working to commercialize hydrogen production technology, including our alkaline water electrolysis system having the world-leading scale of 10 MW at the Fukushima Hydrogen Energy Research Field (FH2R), a NEDO* project.

* Japan's New Energy and Industrial Technology Development Organization



Mobility & Industrial

Operating company | Asahi Kasei

Contributing to safe and comfortable next-generation mobility with an array of Asahi Kasei Group products and technologies centered on automotive applications. Providing innovative materials and solutions for various challenges in industries other than automotive.

Major products

- Dinamica™ artificial suede
- Leona™ nylon 66 filament
- Leona™ PA 66, Tenac™ POM, Xyron™ mPPE, SunForce™ foamed beads, Asaclean™ purging agent
- Adipic acid, cyclohexanol
- Duranate™ HDI-based polyisocyanate



Dinamica™ artificial suede

Featuring a soft touch and luxurious surface, this polyester-based artificial suede is used in automotive interiors and high-end furniture.



Various engineering plastics and SunForce™ foamed beads

Used in lithium-ion battery modules and many other applications for vehicles and home electronics.

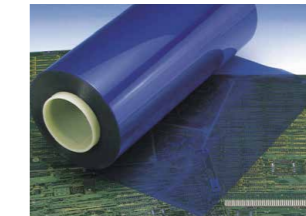
Life Innovation

Operating company | Asahi Kasei
Asahi Kasei Microdevices

A wide range of competitive products offered globally in two domains: Digital Solutions to meet the needs of a digital society with electronic devices and electronic materials, and Comfort Life providing products and services that contribute to healthy and comfortable living.

Major products

- Pimel™ photosensitive polyimide, Sunfort™ dry film, APR™, AFP™ and AWP™ photopolymers
- Klaran™ UVC LEDs
- Semiconductors: Audio/voice LSIs, industrial/machinery LSIs, high-frequency LSIs, automotive LSIs, electronic compasses
- Sensors: Hall elements, Hall ICs, electronic current sensors, gas sensors, range sensors, rotation angle sensors, infrared sensor, open/close sensors
- Bemberg™ cupro fiber, Roica™ premium stretch fiber, Eltas™ spunbond
- Saran Wrap™ cling film, Ziploc™ storage bags
- Ceolus™ MCC
- Baclad™ explosion-bonded metal composites, AR Chemical Setter™ bonded anchors



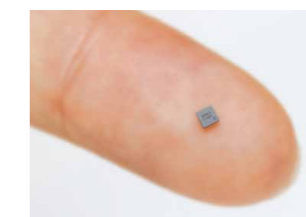
Sunfort™ photosensitive dry film

Used for advanced, high-end applications in the fields of printed wiring boards and semiconductor packages.



LSIs for audio & voice

With a track record of over 30 years in the audio market, we continue to pursue a wide range of technologies related to sound, and provide LSIs for various applications including automobiles and smartphones.



Electronic compass

We have a large share of the global market for electronic compasses, which are used for electronic map applications on smartphones such as pedestrian navigation systems.



Gas sensors

CO₂ concentration is an indicator of indoor air quality. Our CO₂ sensors contribute to energy-efficient ventilation.



Bemberg™ cupro fiber

Featuring a smooth feel, attractive luster, and moisture absorption/release, Bemberg™ from cotton linter is used in applications ranging from high-quality suit linings to functional innerwear and ethnic garments.



Saran Wrap™ cling film

Sold in Japan for more than 60 years featuring superior cling, barrier performance, and heat resistance, it is Japan's best-selling food wrapping film*. *Cumulative sales value from January to December 2022 in SRI+ wrapping film market survey by INTAGE Inc.

Homes

Centered on Hebel Haus™ unit homes and Hebel™ AAC panels, we enable a safe, healthy, and comfortable life with technologies and services that are friendly to people and considerate of the environment.



Health Care

We contribute to progress in medical therapy by advancing specialized leading-edge technology in new combinations and addressing unmet medical needs, enabling patients to enjoy a better quality of life.



Homes

Operating company | Asahi Kasei Homes

Various products and services for living and residency are focused on “long life.” To enable residency to span across different generations, peripheral businesses including remodeling, real estate, and urban redevelopment offer a full range of services to help maintain home asset value over the long term, yielding a truly rich living environment.

Major products

- **Order-built homes (unit homes and apartment buildings):** Hebel Haus™ unit homes, Hebel Maison™ apartments, Hebel Village™ rental homes for seniors, Hebel Builds™ medium-rise buildings
- **Real estate-related operations:** Atlas™ condominiums, brokerage of used Hebel Haus™ homes
- **Remodeling:** Maintenance and remodeling of Hebel Haus™ homes



Hebel Haus™

Our unit homes feature exceptional disaster resistance, livability, and adaptability to enable residents to continue to live with security and comfort.



Hebel Maison™

Built with high-performance materials and components, featuring innovative and high-function designs, and backed by long-term services, our apartment buildings enable superior asset-value retention over the long term.



Atlas™ condominiums

These high-grade condominiums in good locations enable residents to enjoy an urban lifestyle with peace and confidence.



Hebel Village™ rental homes for seniors

Apartments featuring various services for self-dependent seniors who do not require nursing care are focused on urban markets in Japan.

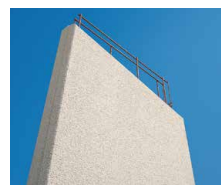
Construction Materials

Operating company | Asahi Kasei Construction Materials

Our construction materials business includes solution-oriented products and related services such as Hebel™ autoclaved aerated concrete (AAC) panels, Neoma Foam™ phenolic foam insulation panels, foundation systems, and steel-frame structural components that meet emerging needs. We continuously strive for improvements and innovations to create new value for the future of high-quality space.

Major products

- **Autoclaved aerated concrete (AAC):** Hebel™, Hebel Lite™, Hebel Powerboard™
- **Thermal insulation:** Neoma Foam™ and Neoma Zeus™ phenolic foam insulation panels, floor insulation panels for wood-frame houses
- **Foundation systems:** Eazet™ screw-tip steel shaft piling systems, ATT Column™ high-friction piling systems with minimal soil disposal
- **Structural systems and components:** BasePack™ column base attachment system



Hebel™ panels

Featuring outstanding flame resistance, thermal insulation, durability, and ease of installation, these panels are especially suited to the climate and construction circumstances of Japan.



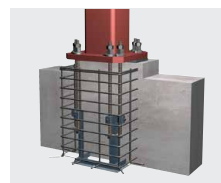
Neoma Foam™ phenolic foam insulation panels

With high-level insulation performance, these panels contribute to the advance of energy-conserving homes.



Eazet™ screw-tip piles

This piling system enables installation in confined spaces while generating little noise or vibration and no soil for disposal.



BasePack™ column base attachment system

This column base attachment system features exceptional earthquake resistance, contributing to the safety and security of steel-frame buildings.

Pharmaceuticals

Operating company | Asahi Kasei Pharma
Veloxis Pharmaceuticals

Our pharmaceuticals business is positioned as a specialized, R&D-centered operation, with the development of new drugs being advanced to offer innovative and unique therapeutic solutions in the fields of orthopedics, critical/intensive care, urology, the immune system, and the central nervous system in Japan and immunosuppressant of Veloxis Pharmaceuticals overseas.

Medical Care

Operating company | Asahi Kasei Medical

Our medical care business contributes to the advancement of medical treatment worldwide via continuous innovation in various fields such as medical device systems that respond to unmet needs (such as chronic and acute renal disease, neurologic diseases and other intractable conditions), filters that improve the quality of blood transfusion products, and products that enable safe and efficient production of biotherapeutics at the cutting edge of new drug development.

Acute Critical Care

Operating company | ZOLL Medical

Our acute critical care business is based on outstanding resuscitation technology. Through our ZOLL family of products, we offer a comprehensive product portfolio that includes professional defibrillators and automated external defibrillators (AEDs), as well as a wearable defibrillator, portable ventilators, a highly efficient intravascular system for managing the core temperature of critically ill patients, and data management systems for care providers. We continue to expand operations in the field of acute critical care to enable better outcomes for patients around the world.

Major products

- **Prescription drugs:** Teribone™, Reclast™, Elcitonin™, Recomodulin™, Bredinin™, Kevzara™, Plaquenil™
- **Diagnostic reagents:** Lucica™ GA-L2 glycosylated albumin assay kit, enzymes for in vitro diagnostic reagents



Teribone™ osteoporosis drug

Human parathyroid hormone preparation that facilitates bone formation.



Recomodulin™ anticoagulant

A thrombomodulin agent produced through genetic engineering, it is used to treat disseminated intravascular coagulation.

Major products

- **Hemodialysis:** Hollow-fiber dialyzers and hemodiafilters
- **Therapeutic apheresis:** Plasma separator, ascites filter/ascites concentrator
- **Bioprocess products:** Planova™ virus removal filters
- **Transfusion products:** Sepacell™ leukocyte reduction filters



Artificial kidneys

Artificial kidneys (dialyzers and hemodiafilters) for hemodialysis are born of Asahi Kasei's core technology of hollow-fiber membrane separation.



Planova™ virus removal filters

Filters developed specifically for removing viruses during the manufacture of biotherapeutics such as biopharmaceuticals and plasma derivatives.

Major products

- R Series™, X Series™, and other defibrillators, AED 3™, AED Plus™, and AED Pro™ automated external defibrillators
- LifeVest™ wearable defibrillator
- AutoPulse™ automated CPR
- Thermogard XP™ temperature management system
- RescueNet™ software and data solutions
- Ventilators
- At-home test device, therapeutic device for sleep apnea



AED 3™

An AED featuring support for appropriate chest compressions.



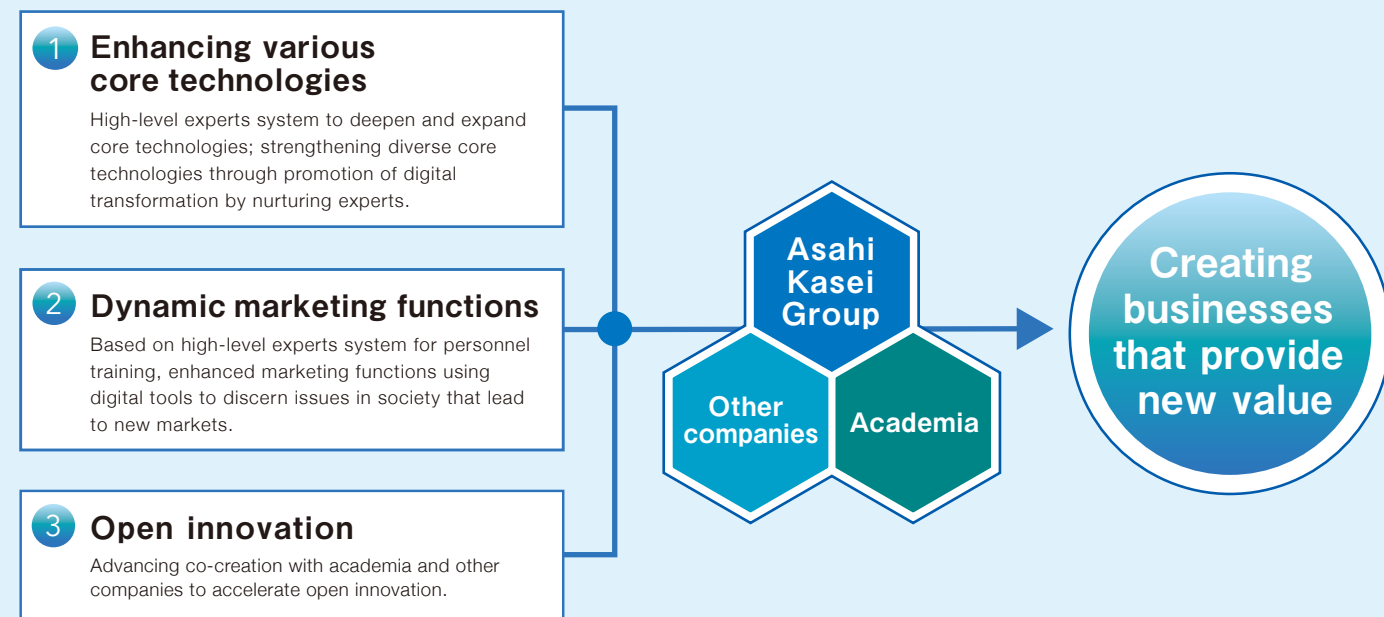
LifeVest™

A wearable defibrillator for patients at high risk of cardiac arrest while awaiting implantation or judgment to implant an ICD.

Fostering innovation through diversity

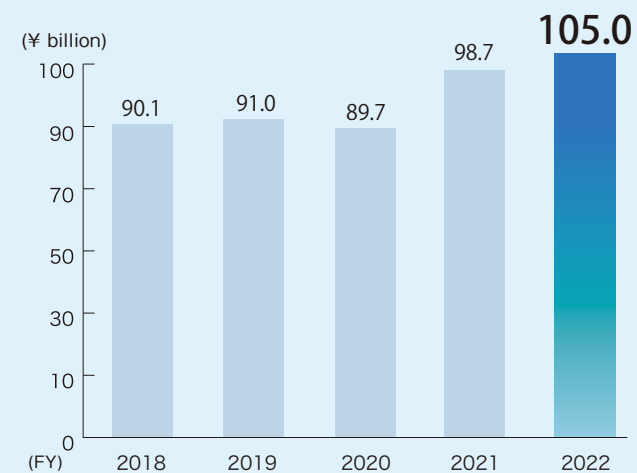
Depending on the degree of novelty and the market growth potential, R&D in the Asahi Kasei Group is divided into medium- to long-term corporate R&D to create new businesses that span across different fields and R&D to enhance established businesses. To leverage the diversity of our operating configuration, external resources such as corporate venture capital (CVC) are proactively utilized for strategic investment in startups in the creation of new businesses.

01 Basic concept for creating new businesses

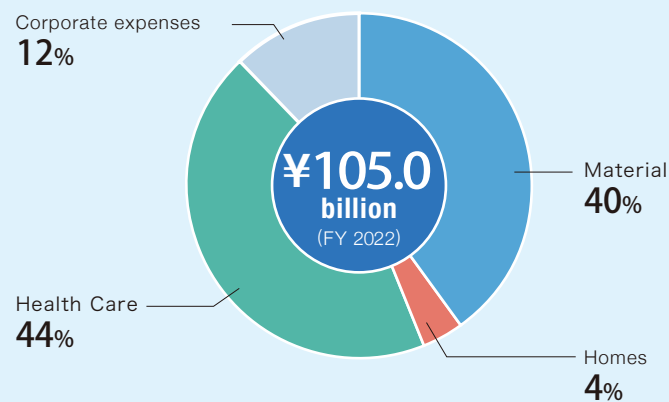


02 R&D expenditure

Annual R&D expenses



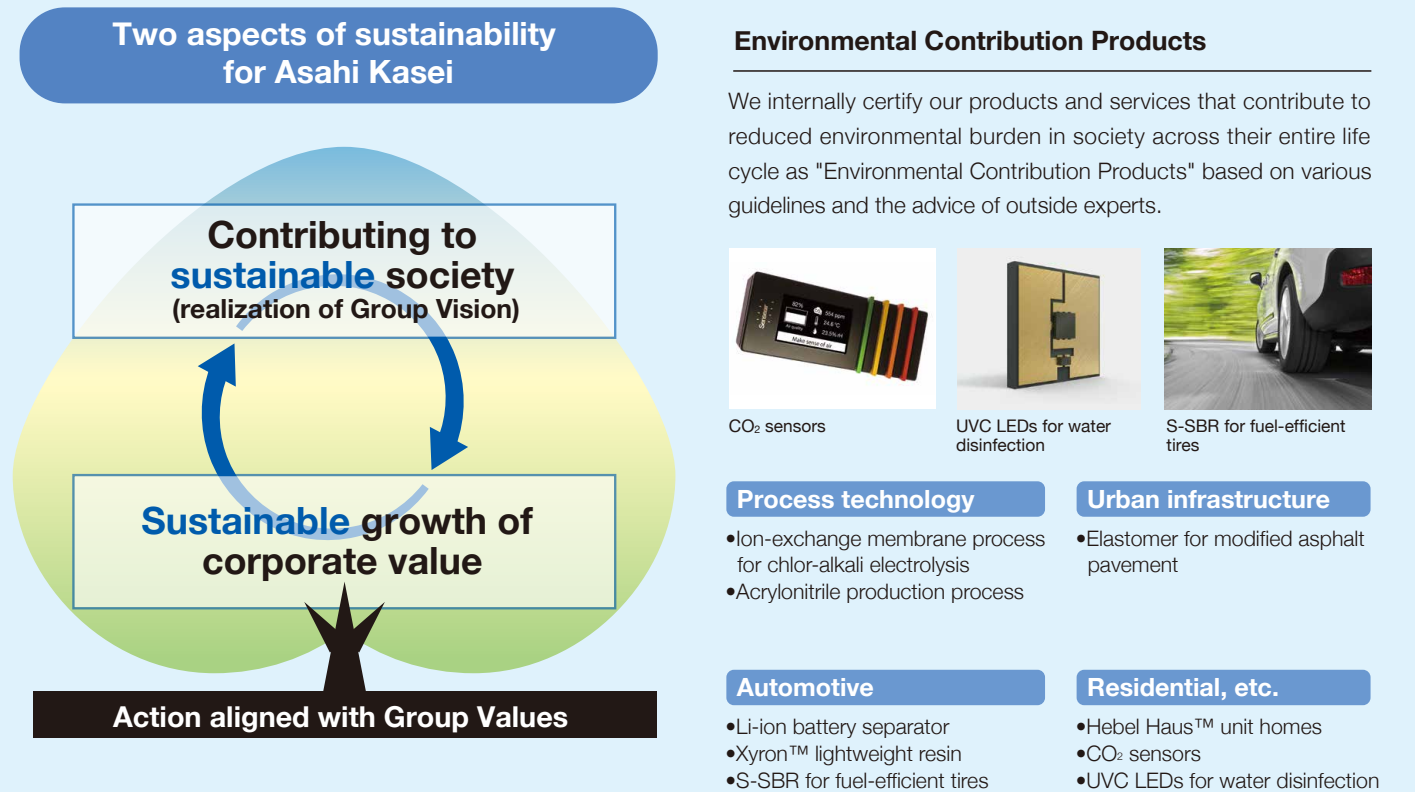
Breakdown of R&D expenses



Contributing to life and living for people around the world

Sustainability for Asahi Kasei

To contribute to life and living for people around the world, the Asahi Kasei Group pursues two mutually reinforcing aspects of sustainability: contributing to sustainable society and sustainable growth of corporate value. Contribution of value to society for sustainability is enabled by high profitability that sustainably increases our corporate value, which in turn allows us to take new challenges for further contributions.



Community fellowship



Raising interest in science among youth

We held an event in support of a government program to raise interest in careers in science and engineering among the young generation.



Tree-planting and reforestation activities

We contribute to the public benefit by planting and nurturing forests that protect local communities from natural disasters such as flooding.



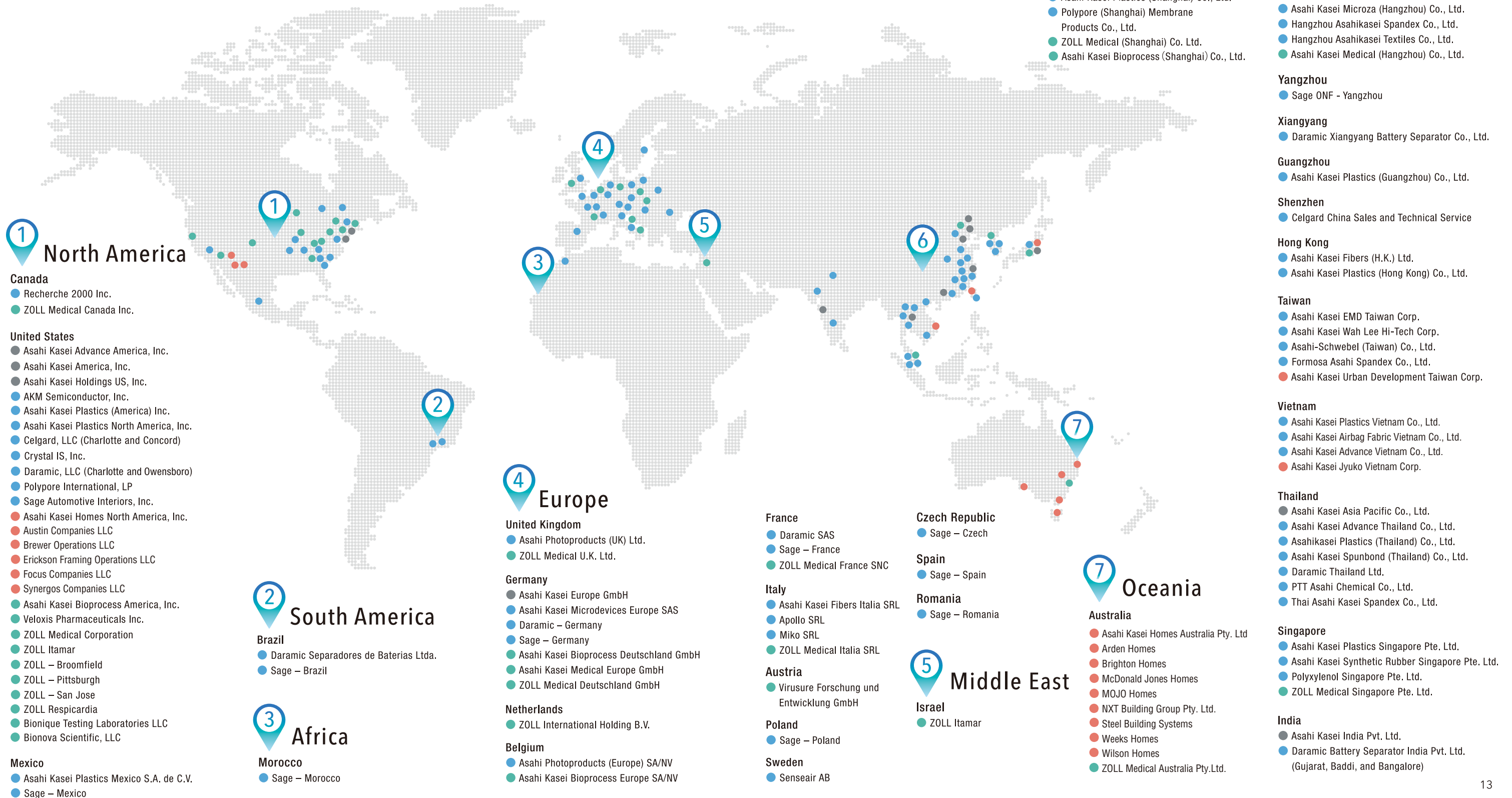
Corporate sports activities

Our judo team and distance running team have produced many Olympic athletes. The teams also actively participate in various community fellowship activities.

Asahi Kasei Worldwide

The Asahi Kasei Group operating bases are located at strategic sites around the world, to facilitate the efficient supply of products and services in each of the major markets.

● Material ● Homes ● Health Care ● Administrative & Other



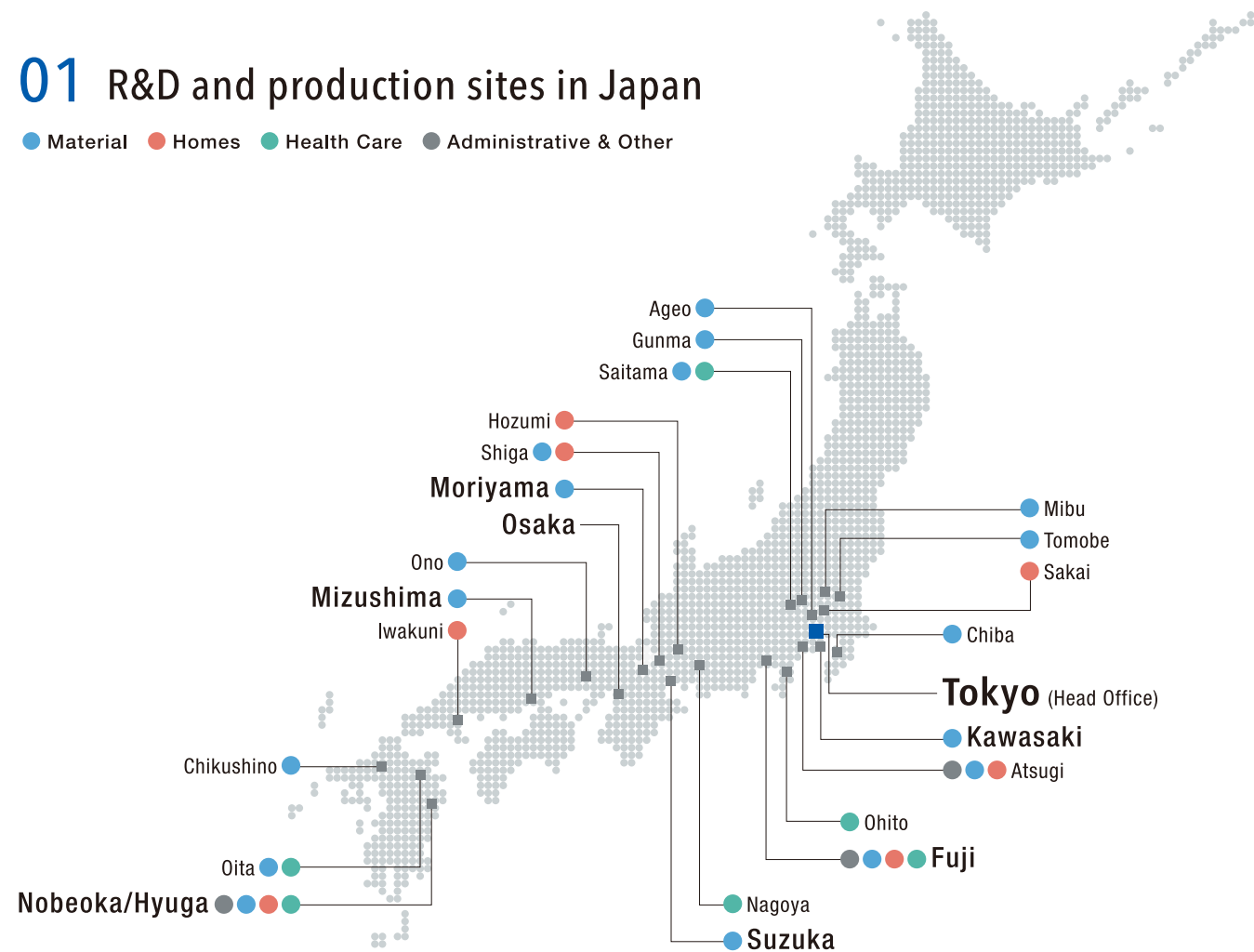
Asahi Kasei Network

New value is created at various locations in Japan

We are advancing the development of our business together with local communities in many locations throughout Japan, including Nobeoka, the birthplace of our operations, Fuji, our core base for R&D, and Mizushima, the center of our petrochemical operations.

01 R&D and production sites in Japan

● Material ● Homes ● Health Care ● Administrative & Other



02 Main subsidiaries and affiliates in Japan

- Asahi Kasei Advance Corp.
- Asahi Kasei Amidas Co., Ltd.
- Asahi Kasei Engineering Corp.
- Asahi Research Center Co., Ltd.
- Asahi Kasei Microdevices Corp.
- Asahi Kasei Color Tech Co., Ltd.
- Asahi Kasei Electronics Co., Ltd.
- Asahi Kasei Epoxy Co., Ltd.
- Asahi Kasei Finechem Co., Ltd.
- Asahi Kasei Home Products Corp.
- Asahi Kasei Metals Ltd.
- Asahi Kasei Microsystems Co., Ltd.
- Asahi Kasei Mitsubishi Chemical Ethylene Corp.
- Asahi Kasei Pax Corp.
- Asahi Kasei Technoplus Co., Ltd.
- Asahi-Schwebel Co., Ltd.
- Asahi SKB Co., Ltd.
- DuPont-Asahi Flash Spun Products Co., Ltd.
- Japan Elastomer Co., Ltd.
- PS Japan Corp.
- Polypore K.K.
- Sage Automotive Interiors Co.,Ltd(Japan)
- Sundic Inc.
- Wacker Asahikasei Silicone Co., Ltd.
- Asahi Kasei Homes Corp.
- Asahi Kasei Construction Materials Corp.
- Asahi Kasei Foundation Systems Corp.
- Asahi Kasei Home Construction Corp.
- Asahi Kasei Homes Financial Corp.
- Asahi Kasei Jyuko Co., Ltd.
- Asahi Kasei Lifeline Corp.
- Asahi Kasei Reform Co., Ltd.
- Asahi Kasei Realty & Residence Corp.
- AJEX Corp.
- Asahi Kasei Pharma Corp.
- Asahi Kasei Medical Co., Ltd.
- Asahi Kasei Medical MT Corp.
- Asahi Kasei ZOLL Medical Corp.
- Med-Tech Inc.

Corporate Profile As of March 31, 2023

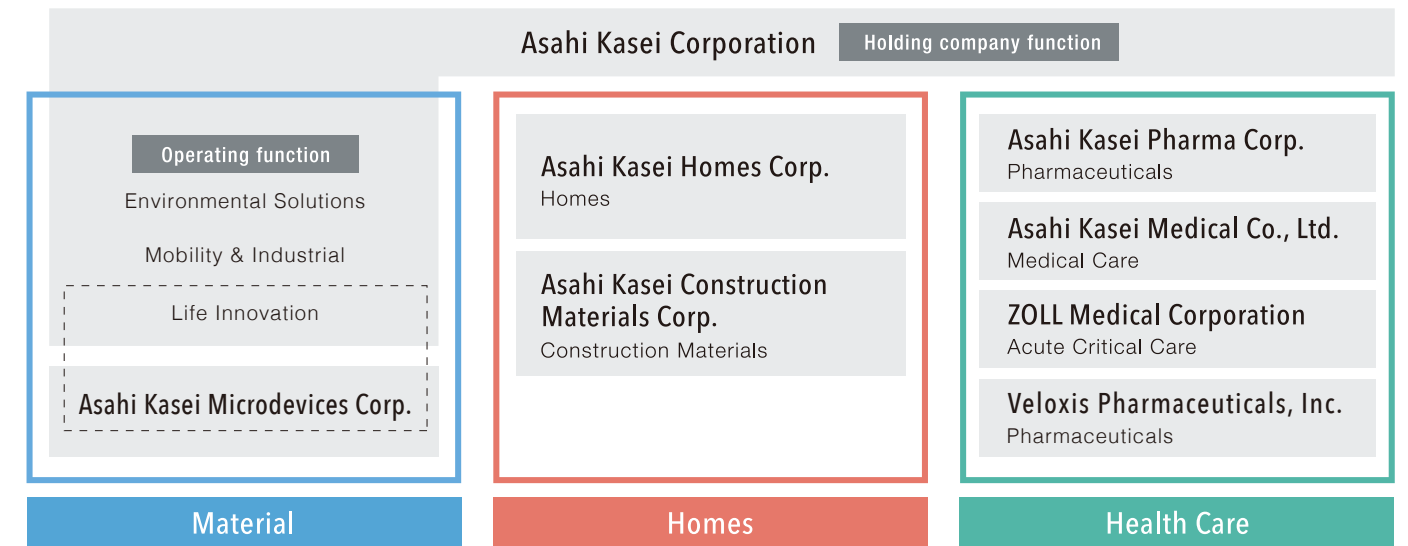
Company name	Asahi Kasei Corporation
Founding	May 25, 1922
Establishment	May 21, 1931
Paid-in capital	¥103,389 million
Outstanding shares	1,393,932,032
Total assets	¥3,454,526million
Fiscal year end	March 31
Employees	48,897

Officers As of June 30, 2023

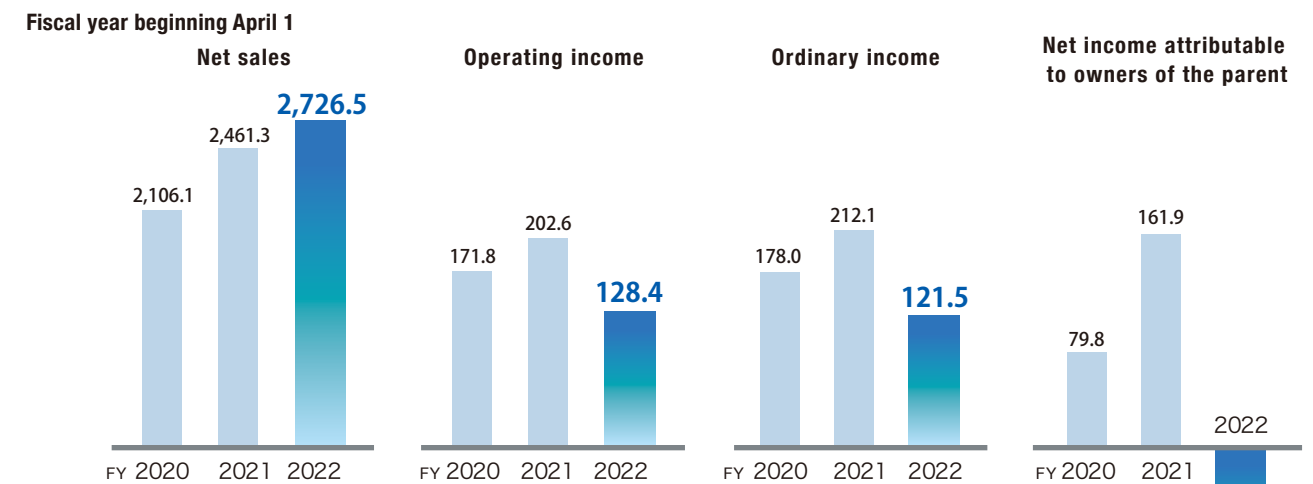
Chairman & Director	Hideki Kobori	Audit & Supervisory Board Member	Yutaka Shibata
President & Representative Director	Koshiro Kudo	Audit & Supervisory Board Member	Takuya Magara
Director	Kazushi Kuse	Outside Audit & Supervisory Board Member	Akemi Mochizuki
Representative Director	Toshiyasu Horie	Outside Audit & Supervisory Board Member	Haruyuki Urata
Director	Hiroki Ideguchi	Outside Audit & Supervisory Board Member	Yoshikazu Ochiai
Director	Masatsugu Kawase		
Outside Director	Tsuneyoshi Tatsuoka		
Outside Director	Tsuyoshi Okamoto		
Outside Director	Yuko Maeda		
Outside Director	Chieko Matsuda		

Corporate configuration

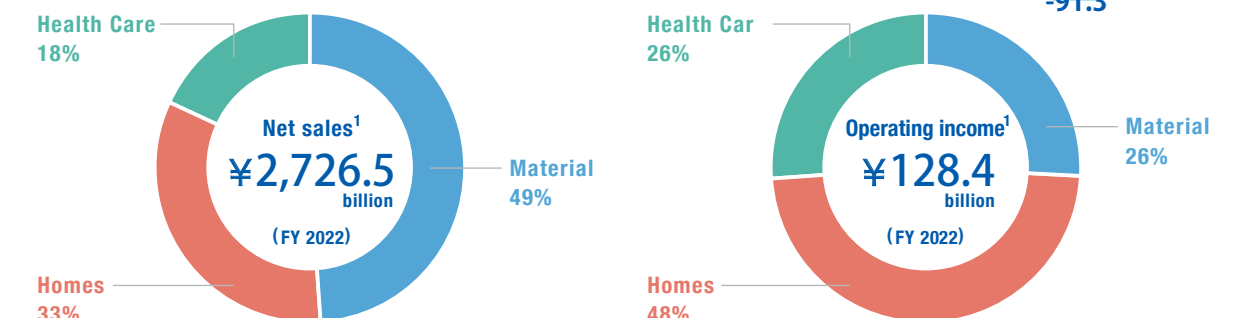
Centered on the operating holding company Asahi Kasei Corp. and seven core operating companies, the Asahi Kasei Group does business in the three sectors of Material, Homes, and Health Care.



Financial highlights (¥billion)



Results by sector



¹ Excluding "Others" category and "corporate expenses and eliminations."